

Ratray Road, SW2

2 bedroom flat for sale

£650,000

Property Details

A beautifully-presented Victorian two double bedroom flat with an idyllic garden and fantastic open plan living space. Ratray Road is a highly sought-after, attractive and quiet street, in an extremely popular pocket of roads between Brixton and Herne Hill. The centre of Brixton is a five-minute walk and leafy Herne Hill is a ten-minute stroll in the opposite direction, with what many local residents regard as London's best green space, Brockwell Park, located within a stone's throw. In short, an exceptional property close to the action but far enough away to offer a tranquil feel.

Features

- Excellent Transport Links
- South-West Facing Private Garden
- Victorian With High Ceilings
- Very Close To Brockwell Park
- Bright And Airy Throughout

Council tax band D

EPC rating C (70)



Ratray Road, SW2

K

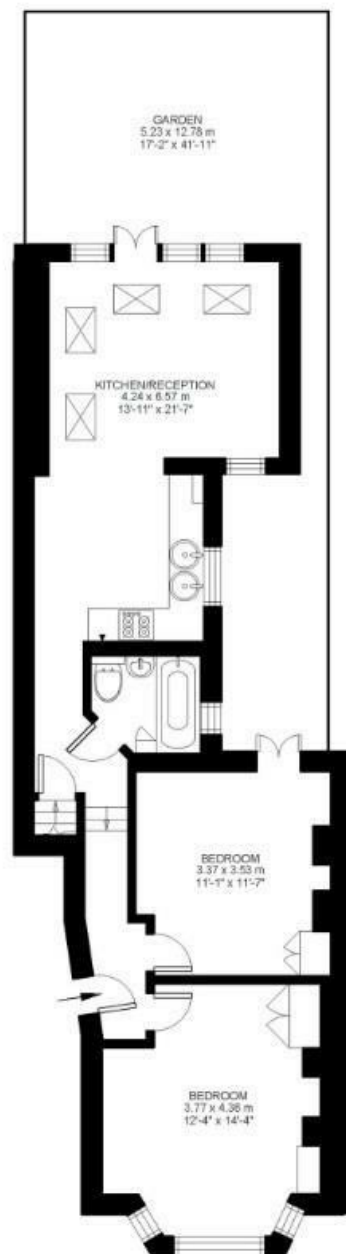
2 Bed flat

Approx internal area:

772 sqft 72 sqm

While we do try our very best, floor plans are produced as a guide only and we take no responsibility for the precise accuracy with which any property is represented

Ratray Road



Ground Floor



Basement



Ratray Road, SW2

